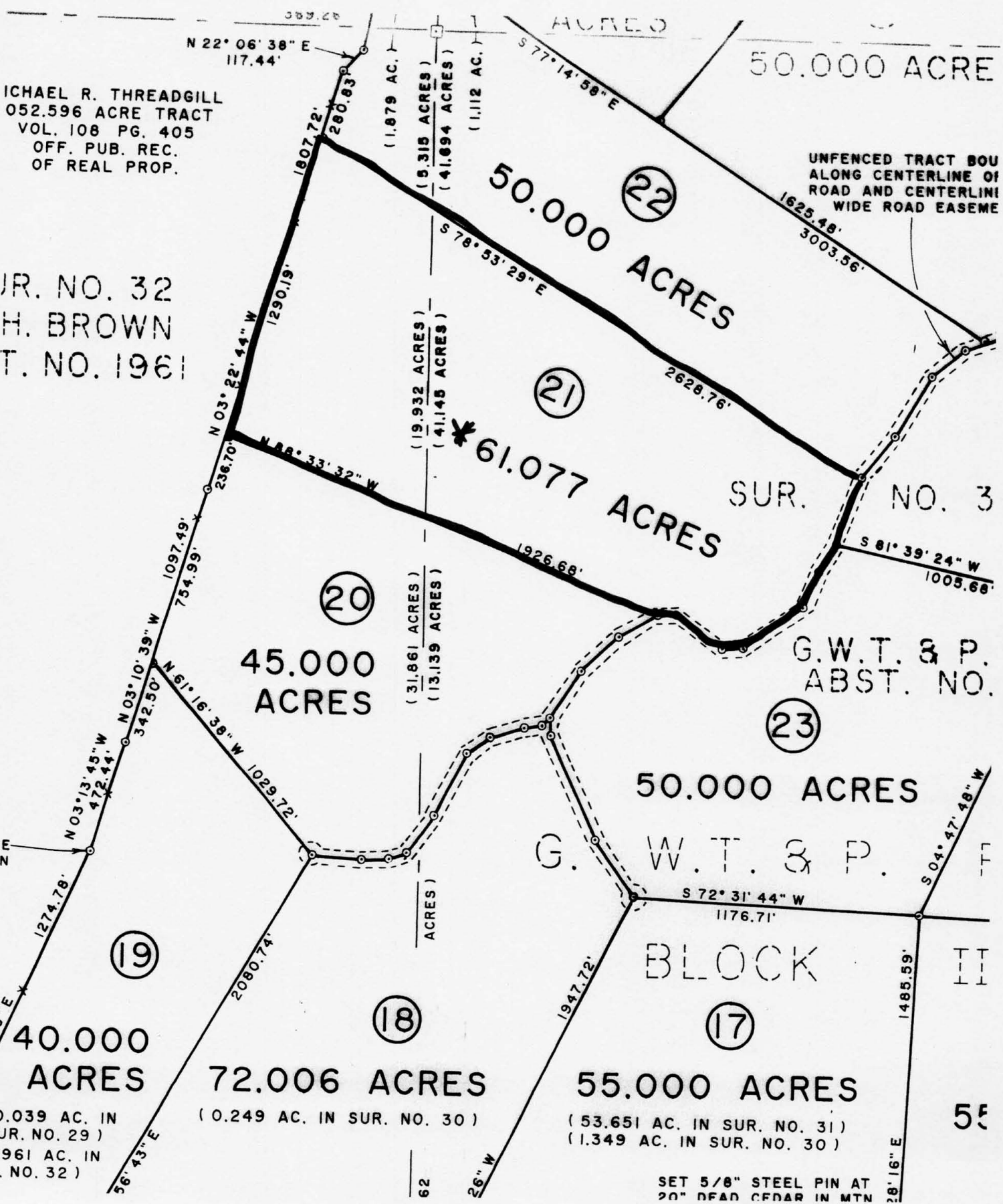


Tract 21, 61.077 ACRES

MICHAEL R. THREADGILL
 052.596 ACRE TRACT
 VOL. 108 PG. 405
 OFF. PUB. REC.
 OF REAL PROP.

JR. NO. 32
 H. BROWN
 T. NO. 1961



N 22° 06' 38" E
 117.44'

ACRES

50.000 ACRE

50.000 ACRES (22)

61.077 ACRES (21)

45.000 ACRES (20)

50.000 ACRES (23)

40.000 ACRES (19)

72.006 ACRES (18)

55.000 ACRES (17)

0.039 AC. IN SUR. NO. 29)
 0.961 AC. IN SUR. NO. 32)

(0.249 AC. IN SUR. NO. 30)

(53.651 AC. IN SUR. NO. 31)
 (1.349 AC. IN SUR. NO. 30)

SET 5/8" STEEL PIN AT
 20" DEAD CEDAR IN MTN

UNFENCED TRACT BOUNDARY
 ALONG CENTERLINE OF
 ROAD AND CENTERLINE
 WIDE ROAD EASEMENT

SUR. NO. 3

G.W.T. & P.
 ABST. NO.

G. W. T. & P.

BLOCK

55